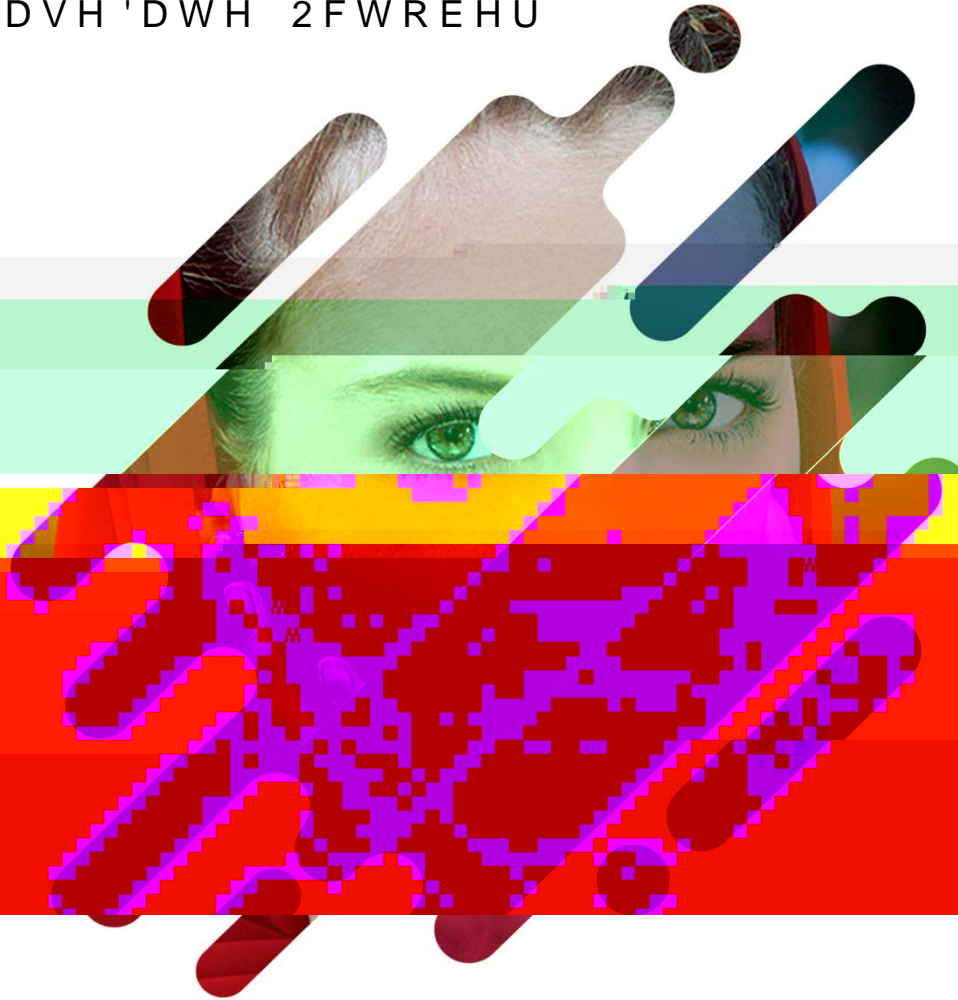




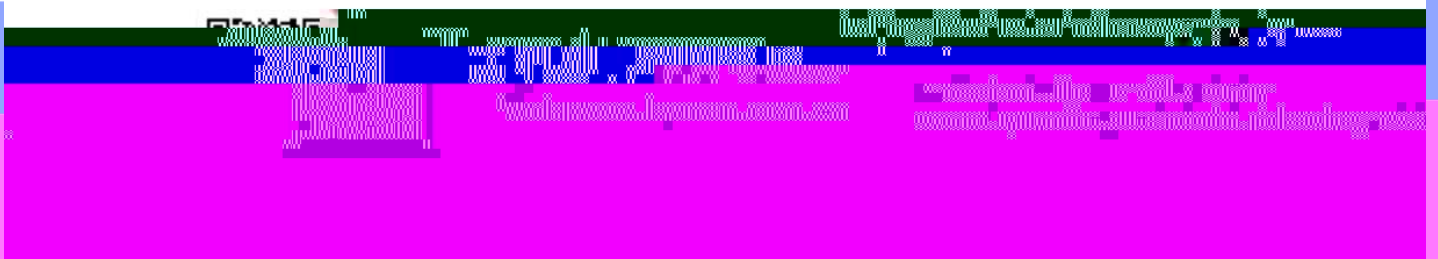
# /( ' UHFHLYHU VHULHV

9HUVLRQ Y

5HOHDVH 'DWH 2FWREHU



## 6SHFLILFDWLRQV



Version history

7KH YHUJXKQJH GHWDLOV		3XEOLVK WLP
QXPEHU		
9	7KH ILUVW YHUVLRQ ZDV UHOHDVHG	
9	ORGLI\WKH GRFXPHQW GHYLFH GHVFULSWLRQ	
9	ORGLI\WKH FRYHU SDJH	

3URGXFW RYHUYLHZ

3URGXFW DSSOLFDFWLRQ

\* UHFHLYLQJ FDUG LV D UHFHLYLQJ GHYLFH WKD  
GLVSOD\ FRQWURO V\VWHP ZKLFK LV XVHG WR FRQ  
FRQWURO VLJQDO RI WKH PRGXOH  
)HDWXUHV

\$ VLQJOH FDUG KDV VWDQGDUG LQWHUIDFHV DQG R  
6XSSRUW DYDULHW\ RI JHQHUDO SXUSRVH FKLSV 3:  
8QLTXH DUELWUDU\ IUHTXHQF\ GRXEOLQVWHFKQROR  
VFDQQQLQJ OLQHV

8QLTXH FRORU WUDQVIRUPDFWLRQ WHFKQRORJ\ PDNH  
UHDOLVWLF

6XSSRUW KLJK JUD\ KLJK EUXVK ORZEULJKWQHVV K  
7KH GHWDLOV DUH KDQGOHG SHUIHFWO\ WR HOLPLQD  
JUD\ DQG UHG JKRVLQJ DQG VR RQ

6XSSRUWV SRLQW E\ SRLQWFRUUDJHWRFRUUDJHFLWFLW  
FRUUHFWLRQ RI ORZ JUD\ FRPSHQVDWLRQ DQG HQVX

6XSSRUW RQH FOLFN UHDEG EDFN SURILOH LQIRUPDW

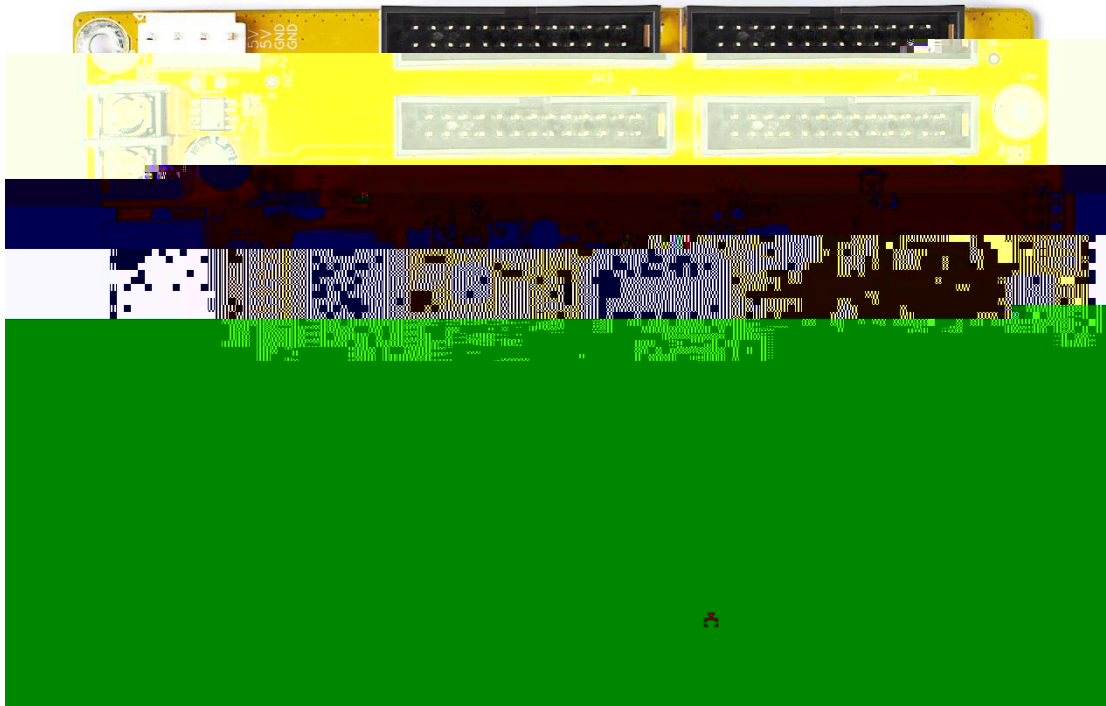
6XSSRUW RQH FOLFN UHSDLU IXQFWLRQ FDUG UHSD

6XSSRUWV UHDO WLRUHGFRUUDJHWRFRUUDJHFLWFLW  
RI QHWZRUN FDEOH FRQQHFWLRQ VHTXHQFH

6XSSRUW DQ\ H[WUDFWLRQ SRLQW HDV\ WR VHW XS D  
VFUHHQV

3URJUDP ZULWH SURWHFWLRQ XSJUDGH SRZHU IDLO

# 3URGXFW DSSHDUDQFH



)LJXUH \* 5HFHLYLQJ FDUG

,QWHUIDFH VLJQDO GHILQLWLRQ

+8% LQWHUIDFH HMWK VWDQGDUG

7KH GHILQLWLRQV DUH DV IROORZV


'HVFULSWLRQ\QKH ZKLFK FDQ EH XVHG DV DEODQNLQ  
 ZKHQ WKH GLVSOD\VFDQ LV OHVV WKDQ VZHHSV  
 \*UHDWHU WKDQ VZHHSV DV DQ (VLJQDO  
 ,QGLFDWRU VWDQG -3  
 7KH SLQV DUH GHILQHGDV IROORZV


#### 4 Description of the LED status

/(' VWDWXV	
/('	7KH SRZHU LQGLFDWRU LV UHG DQG WKH VROLG OLJK SRZHU VXSSO\LV QRUPDO DQG JRHV RII 7KH GHOHJDWH LV QRW SRZHUHG RQ
/('	7KH GHYLFH RSHUDWLRQLQG VFRMURHU LV DUHHQ IODV VLJQDO\LV QRW OLW RU VROLG ZKHQ WKHUH LV QR

#### 5 Electrical parameters

SURMHFW	7KH SDUDPHWHUYDOXH
5DWHG YROWDJH	'& 9 9
5DWHG FXUUHQW	\$ \$
2SHUDWLQJ	• •
WHP SHUDWXUH	
2SHUDWLQJ	
KXPLGLW\	

'LPHQVLRQDO GUDZLQJV

8QLW PP

